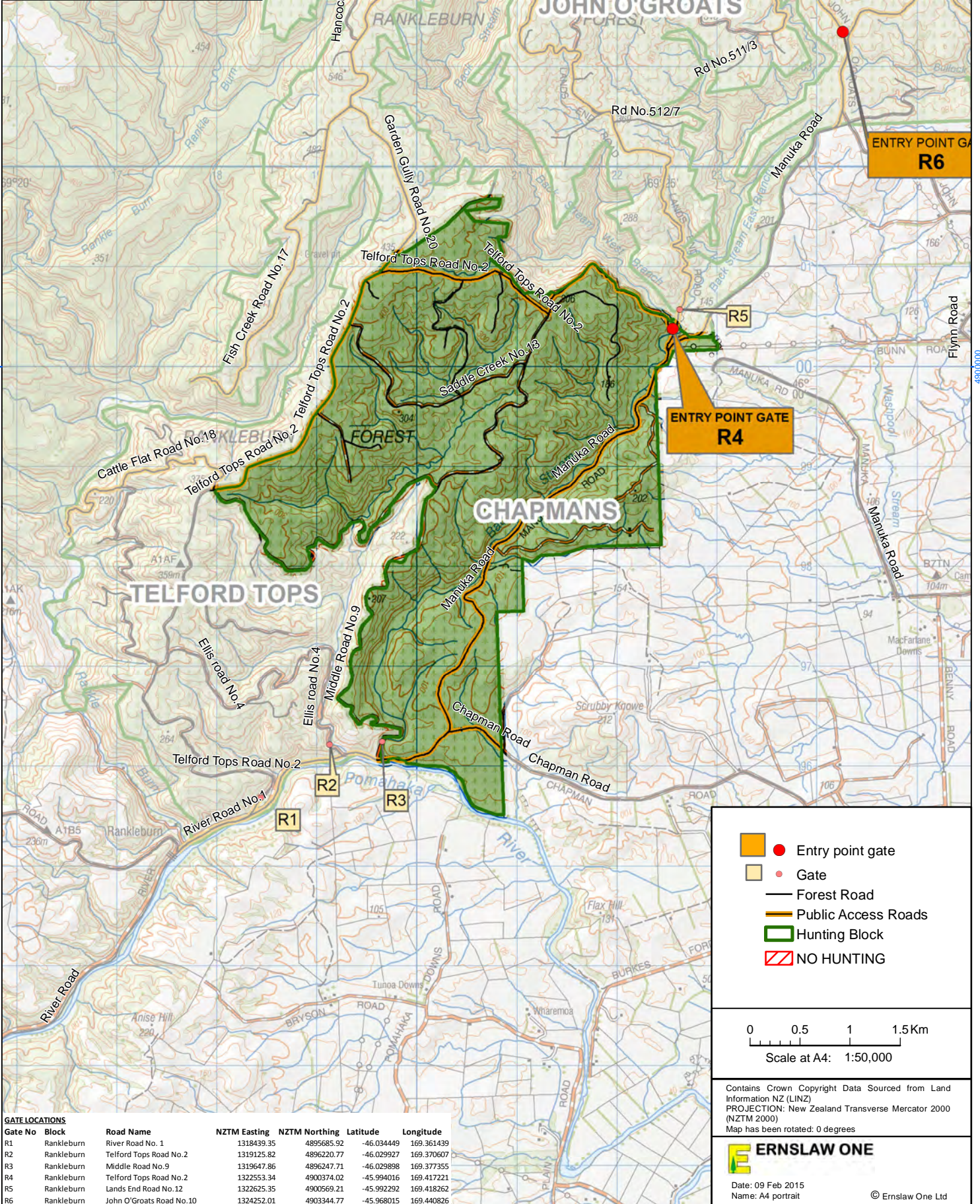
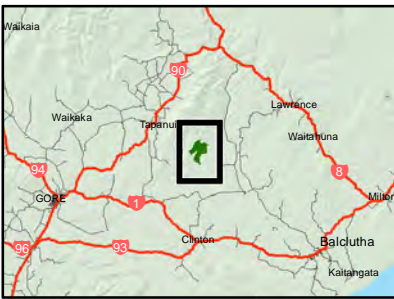


HUNTING BLOCK MAP

Rankleburn Forest

Chapmans Block

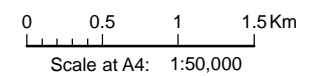
Published: February 2015



GATE LOCATIONS

Gate No	Block	Road Name	NZTM Easting	NZTM Northing	Latitude	Longitude
R1	Rankleburn	River Road No. 1	1318439.35	4895685.92	-46.034449	169.361439
R2	Rankleburn	Telford Tops Road No.2	1319125.82	4896220.77	-46.029927	169.370607
R3	Rankleburn	Middle Road No.9	1319647.86	4896247.71	-46.029898	169.377355
R4	Rankleburn	Telford Tops Road No.2	1322553.34	4900374.02	-45.994016	169.417221
R5	Rankleburn	Lands End Road No.12	1322625.35	4900569.21	-45.992292	169.418262
R6	Rankleburn	John O'Groats Road No.10	1324252.01	4903344.77	-45.968015	169.440826

- Entry point gate
- Gate
- Forest Road
- Public Access Roads
- Hunting Block
- NO HUNTING



Contains Crown Copyright Data Sourced from Land Information NZ (LINZ)
 PROJECTION: New Zealand Transverse Mercator 2000 (NZTM 2000)
 Map has been rotated: 0 degrees



Date: 09 Feb 2015
 Name: A4 portrait

© Ernslaw One Ltd