

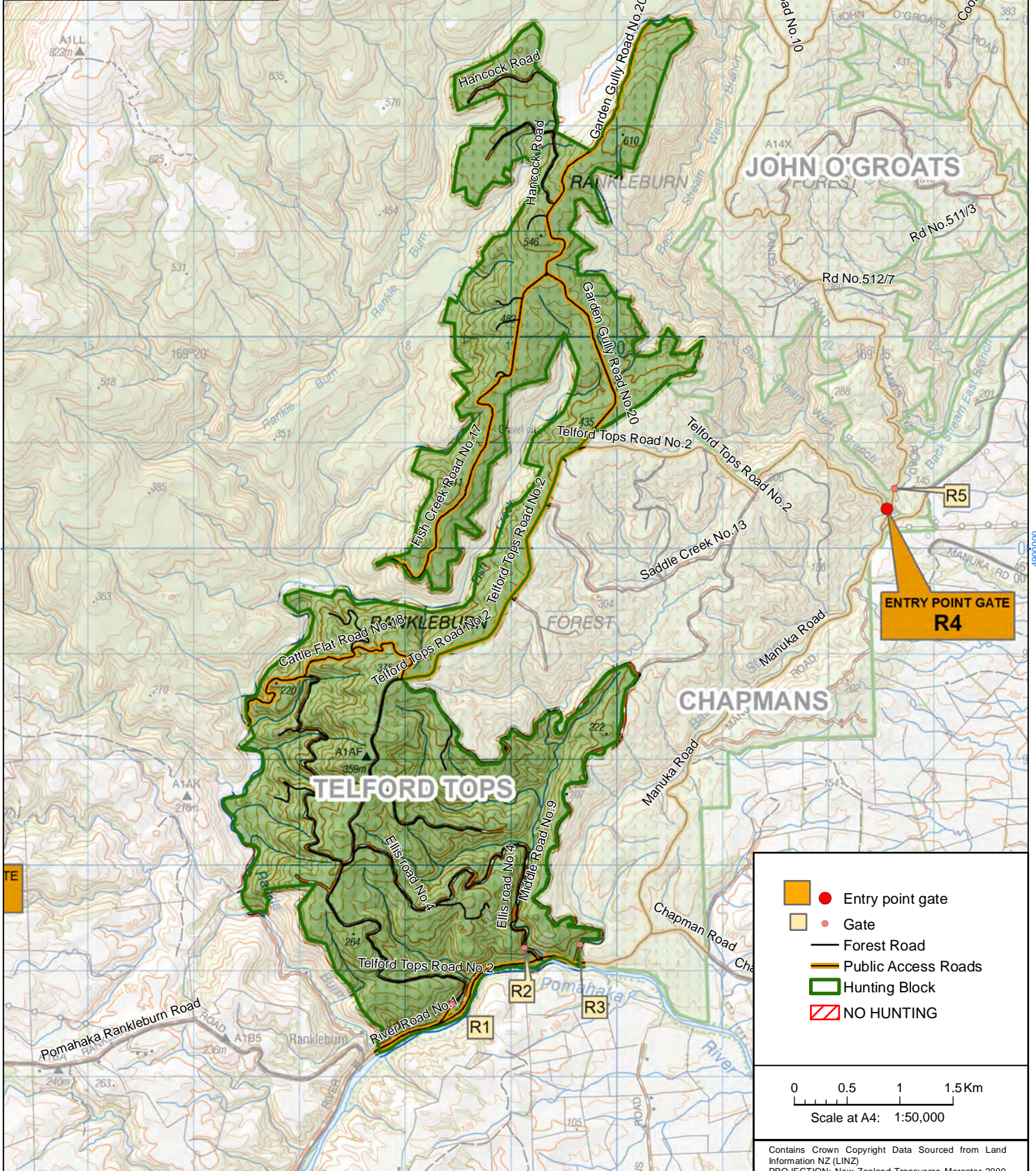
1320000

HUNTING BLOCK MAP

Rankleburn Forest


Telford Tops Block

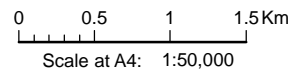
Published: February 2015



4900000

4900000

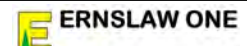
-   Entry point gate
-   Gate
-  Forest Road
-  Public Access Roads
-  Hunting Block
-  NO HUNTING



GATE LOCATIONS

Gate No	Block	Road Name	NZTM Easting	NZTM Northing	Latitude	Longitude
R1	Rankleburn	River Road No. 1	1318439.35	4895685.92	-46.034449	169.361439
R2	Rankleburn	Telford Tops Road No. 2	1319125.82	4896220.77	-46.029927	169.370607
R3	Rankleburn	Middle Road No. 9	1319647.86	4896247.71	-46.029898	169.377355
R4	Rankleburn	Telford Tops Road No. 2	1322553.34	4900374.02	-45.994016	169.417221
R5	Rankleburn	Lands End Road No. 12	1322625.35	4900569.21	-45.992292	169.418262
R6	Rankleburn	John O'Groats Road No. 10	1324252.01	4903344.77	-45.968015	169.440826

Contains Crown Copyright Data Sourced from Land Information NZ (LINZ)
 PROJECTION: New Zealand Transverse Mercator 2000 (NZTM 2000)
 Map has been rotated: 0 degrees



Date: 09 Feb 2015
 Name: A4 portrait
 © Ernslaw One Ltd

1320000